



# Public Celebrations of Mass In Time of Pandemic

## GUIDE FOR ST. ANN'S LAY FAITHFUL

All the faithful of the Diocese of Arlington are **dispensed from the obligation to attend Mass** on Sundays and holy days of obligation until further notice.

**Those Who Are Vulnerable** · If you or those for whom you care are “vulnerable” to infection or the serious effects of coronavirus, please avoid gatherings of the general public.

Those who are “vulnerable”

- are over the age of 65,
- have existing heart or lung conditions,
- have diabetes, &/or are otherwise Immuno-compromised.

**Those Who Feel Sick** · If you feel sick in any way, are coughing, or are sneezing frequently, please avoid public gatherings, including liturgical celebrations.

**Livestreamed Masses** · St. Ann will continue to livestream the 11a.m. Mass. If you are vulnerable, sick, or concerned with your safety or the safety of those whom you regularly encounter, please continue to unite prayerfully to the Mass via livestream.

**In-Person Participation** · St. Ann will coordinate in-person participation for the Mass and other liturgies. You can either sign up for your Mass attendance

in advance online (parish website) or you can ‘walk in’, in which case a first come, first serve entrance will be followed by the ushers.

### **Person-Per-Gathering Limits** ·

Seating capacity for every public Mass is limited to a maximum of 50%. A reserved section of the church will be assigned for signed-up participants and the rest of the available pews will be for walk-ins. There is no need to sign up for a weekday Mass.

If the number of participants exceeds the limit, ushers will have to ask individuals to come to a different Mass. Please avoid putting our beloved priests and ministers in this unfortunate position. Above all, exercise charity!

### **New Mass Schedule** ·

**Weekends: Saturday 5:30p.m. Vigil**  
**Sundays 8a.m. & 11a.m. (Eng.)**  
**2p.m. (Spanish)**

**Weekdays: Monday – Saturday, 8:30a.m.**  
**Friday 6p.m. English**

Consider coming to a weekday Mass if you are concerned about crowds and to ensure a seat.

**Social Distancing** · The Diocese requires every parish to ensure social distancing with due respect for the reverent enactment of the sacred rites.

- There will be no large gatherings before or after Mass in the narthex.

### **Pews** ·

- We can no longer come in for Mass and go straight to our regular pews. Everyone is learning how to give up the pre-COVID-19 ways concerning celebrating Mass. This includes giving up our coveted family pew and spots in the church.
- Pews marked with printed family pictures (considered blocked) are to remain unoccupied at all times.
- Kindly follow the directions of ushers, as well as posted signs and markings.
- Members of a single household do not need to practice physical distancing with each other. (For example, if a group arrived in a single private vehicle, they could sit together in the same row.)
- Other than family/household units, worshippers should be seated six feet apart in all directions.
- For Church Seating lay-out, please see drawing below.

**Disinfection & Ventilation** · In order to ensure disinfection and ventilation before and after each liturgy, the church may be closed briefly. St. Ann welcomes volunteers to help disinfect pews and high-touch surfaces after each Mass.

**Holy Water & Hymnals** · The baptismal font will remain empty during this time. The hymnals and missalettes are removed from pews. For Masses with music, we will project the lyrics of

selected hymns on a screen located near the sanctuary.

**Ushers** · For each liturgy, ushers will be at the church exterior doors, by the baptismal font, and inside the church to assist with seating and ensure that safety practices are observed. This ministry is especially challenging at this time. Please be patient, understanding, and kind in following the directions of all ushers.

## **Preparing**

**Face Coverings** · You are expected to wear a cloth face covering or disposable face mask. **Please bring your own.**

**Hand Hygiene** · You are expected to disinfect your hands when entering the church and encouraged to do so again immediately before receiving Communion. Please bring your own hand sanitizer, which should contain at least 60% alcohol.

## **Celebrating**

**Processions** · Ministers will maintain social distancing during processions. Please also remain six feet from ministers in procession.

**Presentation of the Gifts** · The presentation of gifts by members of the assembly will be omitted.

**Collection** · Collection baskets are placed at the back of the church for parishioners to drop donations. No passing of collection baskets will take place during the liturgy. If you are not yet enrolled in Faith Direct, please consider supporting your parish

through online giving.

**Lord's Prayer** · The Diocese prohibits holding hands during the Lord's Prayer.

**Sign of Peace** · The exchange of peace may still be given in a safe manner through a wave of a hand or a bow of reverence.

**Communion** ·

- The Diocese suppresses the distribution of the Precious Blood until further notice.
- If you require low-gluten host, kindly inform the priest ahead of time.
- All present who are in a state of grace may receive Communion. Those who have health concerns are not obliged.
- Stations for the distribution of Holy Communion will remain the same. The center aisle, however, will have only one line rather than two.
- Please maintain social distancing in the Communion Procession.
- If receiving Communion, you are asked out of charity and consideration of others to receive Communion in the hand.
- Procedure for receiving Communion at St. Ann:
  1. Remove any gloves and disinfect your hands.
  2. Stand six feet away from the minister as the minister shows the Host and says, "The Body of Christ."
  3. Still six feet away, respond "Amen." Face coverings remain in place over the mouth and nose.
  4. When receiving in the hand, approach the minister and receive the Host. Reverently holding the Host, steps aside, lower the face covering, consume the Host, and immediately return the face covering.

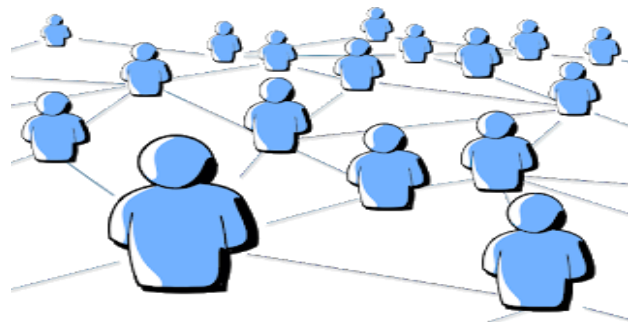
- You may not receive Communion in the hand while wearing gloves. If you wear gloves and wish to receive Communion in the hand, please remove your gloves for the reception of Communion.
- Ministers are encouraged to disinfect their hands immediately after each and every communicant who receives on the tongue, even if no physical contact has occurred.
- Ministers are also encouraged to disinfect their hands immediately if accidental contact is made with a communicant's hand.

**Dismissal after Final Blessing** ·

Dismissal of the assembly after Mass will be row by row.

**Use of restrooms** ·

2 persons enter a restroom at the same time. Others should stand in line to wait for the restroom, while maintaining a 6-foot distance from each other. There are also restrooms located on the first floor.



**Limited In-Person Participation / Church Seating for Walk-In and Sign-Up Reservation**

