



*Saint Ann Parish*  
*2017 Stewardship Report*  
*5300 10<sup>th</sup> St. N., Arlington, VA*  
*Saint Ann Parish is served by*  
*Missionhurst C.I.C.M. Missionaries since 2013*



Dear Saint Ann Parishioners,

I am proud to present to you the 2017 St. Ann Stewardship Report.

The year 2017 is a special one for our parish. From its foundation in 1947 with Fr. Beattie as founding pastor to today, the parish has been blessed by God through the generations of families who have considered Saint Ann as their spiritual home.

The 70<sup>th</sup> birthday of Saint Ann Parish is a testimony of the work of God through us. ‘God’s Faithfulness lasts through Every Generation’ - the theme of this year’s commemoration - is a statement of faith about how good the Lord has been to us.

The 2017 Stewardship Report tells a story about our parish. It may be an incomplete story but “who we are and what’s ahead of us” are reflected in the pages of this report.

The parish continues to grow, both in number and in ministries. This translates to financial commitments to Catholic education, support for faith formation and youth programs, missionary works to assist the poor and facility improvement and maintenance. There’s a lot more we can do to start meaningful programs or address building needs if necessary resources are available.

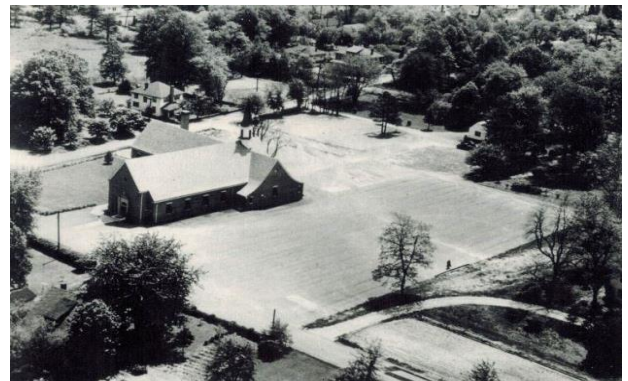
The generous giving of time, talent and treasure for the works of Saint Ann parish allows us to continue what Fr. Beattie started 70 years ago. Now, we are bigger in number, with more needs and priorities. Therefore, I ask that every member of Saint Ann maintains or even considers an increase in giving. Participation in building community and sharing one’s gifts with Saint Ann is a responsibility that belongs to all, not just to the few. Our stewardship as a way of life is a mark of our faith practice.

We celebrate our faith and works as a parish. Thank you for making St. Ann a “welcoming parish”. May God always be praised in all that we do for St. Ann!

In Christ,  
 Fr. Mel O. Portula, CICM  
 Pastor

***Mission Statement***

*We, the family of Saint Ann Parish, called to continual conversion to live as followers of Christ as found in the Gospels, commit ourselves to live our Catholic faith more fully in word, sacrament, and service.*



***70th Anniversary of St. Ann Parish***  
***70th Aniversario de la Iglesia***  
***de Santa Ana***  
***1947-2017***

***“God’s Faithfulness Lasts through Every Generation”***  
***“La Fidelidad de Dios Perdura a través de Todas las Generaciones”***  
*(Ps. 100:5)*



*We are...*

**1,825 Families**

**4,106 Registered Parishioners**

**181 New Families**

**Parish Staff Members**

Priests – 2  
Church Employees – 12  
Permanent Deacons – 1  
School Employees – 41

**Volunteer Leadership**

Pastoral Council – 10  
Finance Council – 7  
Liturgy Committee – 9

**Liturgical Ministry Participation**

Altar Servers – 36  
Arts & Environment Volunteers – 32  
Eucharistic Ministers – 80  
Choir Members – 90  
Lectors – 46  
Ushers – English Masses - 24 (Spanish Masses – 24)

**Education & Faith Formation**

**Program Participation**

Saint Ann School Students (PreK–8th) – 233  
Faith Formation Students (K–8th) – 731  
Invictus Youth Ministries (6-12th grade) – 78  
RCIA – 5  
Nursery – 75  
Children’s Liturgy – 50  
Adult Religious Enrichment – 60  
Faith Formation Catechists & Volunteers – 101

Throughout the 2016-17 school year, the **Saint Ann School** community shared in the Church’s mission of stewardship and care of God’s people. Students, parents, faculty, and staff walked for Borromeo Housing, collected food for Justice is Served, and mobilized in Saint Households during Operation Saint Nick to pack tube socks with daily necessities for Arlington citizens living in need. During Advent, students participated in We Care Week, a diocesan program to benefit Catholic Charities and their efforts to address the needs of people of all faiths within the Diocese. In the spring, Pre-K students platted against hunger by planting onions, radishes, and other vegetables in the Community Garden. The vegetables will be harvested in the fall of 2017 to benefit the Arlington Food Assistance Center. The Venga program, initiated by the Diocese of Arlington to provide assistance and support to Latino parents who want their children to have a Catholic education, continued to grow.

The **RCIA team** welcomed 5 members into full communion with the Church and our **Nursery** (now offered at the 9:00 & 11:00 am Masses) and **Children’s Liturgy** programs continue to grow. Our combined efforts resulted in the celebration of the following sacraments: 65 infant baptisms, 4 adult baptisms, 160 first communions, 93 confirmations, 10 weddings, approximately 350 anointing and 28 funerals.

**Invictus Youth Ministries** endeavors to provide an environment where young people can come to have a real and substantive relationship with Jesus Christ. It is through weekly meetings and occasional events and trips that Invictus hopes to provide our young people with this sense of belonging and a conviction that Christ loves them.

101 volunteers in our **Faith Formation Program** provided a record number of students with English and Spanish-language instruction in the Catholic faith; the **Adult Religious Enrichment (ARE) Committee** has 13 volunteers coordinated 4

**Ministry & Outreach Programs**

Advent Giving Tree  
AFAC Food Drive  
A-SPAN Collections  
Arlington Interfaith Council  
Bagged Meals for the Homeless  
Back to School Supplies Drive  
Blood Drive  
Hospice/Hospital Ministry  
Lenten Soup Suppers  
Meals on Wheels  
Refugee Services Support  
Slippers & Socks Drive  
St. Lucy Food Drive  
Sunrise Nursing Home

**Spiritual and Fellowship Programs**

Catholic Daughters of the Americas  
Junior Catholic Daughters of the Americas  
Grupo de Oracion  
Legion of Mary - 24 /Legión de María  
Sunday Coffee & Doughnuts

**Youth Programs**

CYO Sports  
Cub Scouts (53) & Boy Scouts (20)  
Girl Scouts (Daisy/Brownie/Junior & Cadettes)

programs focused on the *Pastoral Initiatives of Pope Francis* with 240 attendants and 6 programs featuring Bishop Barron’s *Catholicism, the Pivotal Players* series with 600 plus attendants.

**Saint Ann Samaritan Fund** provided financial assistance to 137 individuals in need totaling \$14,761; 11,765 pounds of food and \$1,865 were collected for the **Arlington Food Assistance Center (AFAC)**.

Through the **Advent Giving Tree** \$21,200 was collected for **Borromeo Housing, Migration and Refugee Services (MRS), HOPE and Reading Connection.**

Thousands of dollars-worth of household goods and over \$4,000 in gift cards, cash and checks were donated to help **MRS**; 1126 pairs of socks and 55 pairs of slippers were collected for **A-SPAN** and the **St. Martin de Porres Senior Center**; 14 St. Ann volunteers participated in the ministry of **servicing dinner once a month to residents of A-SPAN**. 2009 pounds of food were collected for the **St. Lucy Project**; material contributions covering the year’s needs of students and \$300 in cash were donated for our annual **School Supplies Drive**. In support of **A-SPAN**, Saint Ann volunteers prepared and delivered 600 bagged meals for the homeless.

27 volunteers visited, prayed and brought Holy Communion to hundreds of patients at **Virginia Hospital Center**. Patients are visited 365 days a yr.; 12 volunteers visited, prayed and brought Holy Communion to hundreds of patients at **Capital Caring Hospice**. An average of 25 to 20 volunteers help support the liturgical service held for the residents at the **Sunrise Retirement Community** each Sunday at 1:30 pm.

**Catholic Daughters of America** sewed 200 diapers for the babies of Haiti. Movie showings collected and donated \$280 was donated to the Dominican Sisters in Linden, VA and \$200 was donated to Holy Cross Family Rosary.

## Statement of Income - Fiscal Years (FY) Ended June 30, 2017 and 2016 and FY18 Budget

Combined Actual			FY 2018 Budget		
FY 2016	FY 2017		Church	School	Total
<b>OPERATING INCOME</b>					
1,399,816	1,491,708	Collections	1,530,000	0	1,530,000
12,630	18,550	Liturgical & Sacramental	10,000	0	10,000
23,635	11,450	Other Operating	13,000	15,000	28,000
1,482,624	1,482,173	Tuition	0	1,475,000	1,475,000
156,299	165,537	Student Services	0	135,000	135,000
161,920	131,818	Faith Formation & Youth Ministry	140,000	0	140,000
108,577	95,983	Fundraising	30,000	85,000	115,000
189,936	150,632	Other	90,000	32,000	122,000
<b>3,535,437</b>	<b>3,547,851</b>	<b>Total</b>	<b>1,813,000</b>	<b>1,742,000</b>	<b>3,555,000</b>
<b>OPERATING EXPENSE</b>					
2,069,167	2,215,190	Salary & Benefits	626,000	1,590,000	2,216,000
226,794	272,590	Facilities	227,000	97,000	324,000
242,199	151,075	General Operating	85,000	128,000	213,000
34,613	42,497	Liturgical & Sacramental	29,000	0	29,000
113,468	113,290	School Instructional	0	45,000	45,000
148,578	120,837	Faith Formation & Youth Ministry	172,000	0	172,000
175,834	212,054	Other	180,000	30,000	210,000
<b>3,010,653</b>	<b>3,127,533</b>	<b>Total</b>	<b>1,319,000</b>	<b>1,890,000</b>	<b>3,209,000</b>
524,784	420,318	<b>NET OPERATING INCOME</b>	494,000	-148,000	346,000
58,070	66,169	Extraordinary Income		0	0
-470,843	-305,494	Capital Expense		-71,500	-71,500
112,011	180,993	<b>NET INCOME</b>	494,000	-219,500	274,500
		School Support	-219,500	219,500	0
112,011	180,993	<b>INCOME AFTER SUPPORT</b>	274,500	0	274,500

### *FY 2017 Highlights*

- Overall collection income remained flat in 2016-2017. Despite flat revenues the parish was able to continue to build reserves with a surplus. Surplus was achieved primarily by a reduction in expenses while adding to staff to meet the needs of a growing parish.
- Parish Invested support of over \$70,000 in various ministries, \$300,000 in school and over \$200,000 in capital improvements in the church facilities.
- Major projects over the past year included an upgrade to the HVAC system, new roofing on two buildings and adding security and access systems to the entire campus.

**Offertory Report:**

Number of parishioners receiving envelopes: 1490  
 Number of parishioners using envelopes for Sunday Masses on a regular basis: 292  
 Number of parishioners contributing through Faith Direct: 375  
 Average weekly offering: \$37.00

Many people ask whether there is a standard for giving to the weekly collections. The following is a guide.

Saint Ann Parish Bulletin Periodic Donation Advisory				
Weekly Household Contribution Based on a Percentage of Family Income of				
Annual Household Income	4%	5%	6%	Tithing 10%
25,000	19	24	29	48
30,000	23	29	35	58
40,000	31	38	46	77
50,000	38	48	58	96
75,000	58	72	87	144
90,000	69	87	104	173
100,000	77	96	115	192
150,000	115	144	173	288
200,000	154	192	231	385

**Please consider our Pastoral and Financial priorities for this Fiscal Year (July 1, 2017- June 30, 2018)**

Saint Ann is developing a three-year Parish Pastoral Plan as a follow up to last year's CARA Survey. We have identified six sub-committees: Worship, Faith Formation/Youth/Catholic Education, Evangelization, Stewardship, Social Outreach, and Community Life. The sub-committees presented goals/priorities for Saint Ann based on these elements of parish life. A Planning Committee is working on a draft of a Parish Pastoral Plan and a Mission Statement which will be presented to parishioners for review. In light of this, the following priorities remain important and need your strong spiritual and financial giving:

- **Faith Formation and Evangelization:** Dynamic programs for faith formation for children/youth and adults, increasing need for more personnel to support ministries and resources for ministers. The parish's investment in Catholic Education continues to be a priority for the parish.
- **Capital Projects and Facility Maintenance:** A new parish website to address growing needs in church and school administration, ongoing facility maintenance and improvements - especially the SAS buildings. These projects are funded from your contributions. Please be generous to the Property and Building Fund (yellow envelope and Faith Direct).
- **Care for the Poor:** At Saint Ann we extend a helping hand to the poor in many and various ways throughout the year through our charitable activities. We also extend help through the Saint Ann Samaritan Fund that is financed through parish contributions.

Included in this Annual Stewardship Report is the Household Offertory Card – Commitment of Treasure. May I request you take the time with your family to pray for our parish and consider your continued financial support or possibly consider increasing your contribution to the parish?

**Kindly mail a completed Commitment Card to Saint Ann Parish.** This serves as your symbolic offering of your commitment to materially and spiritually support Saint Ann. The information you provide on this card will remain confidential. If there is a change in your weekly / monthly / quarterly contribution, either through the regular envelope or *Faith Direct*, please consider Nov. 1 as your starting date.

May our good Lord, through the intercession of Saint Ann our patroness, bless you abundantly and keep you and your loved ones under His protection.

In Christ,  
 Fr. Mel O. Portula, CICM  
 Pastor